



ROME
WEST
REALTY

2756 LAFAYETTE ST. LOUIS MO 63104

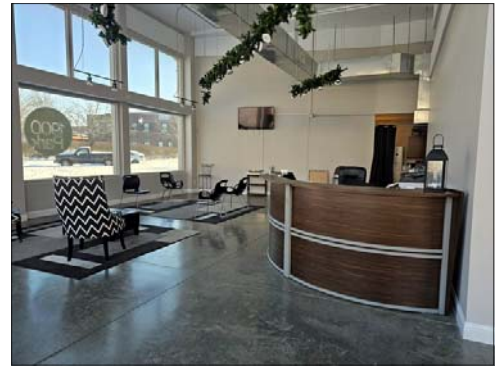
314-833-5551

1900-1904 Park Ave., St. Louis, MO 63104



- 2,780 SF (including approx. 800 SF mezzanine)
- Newer construction (2006)
- Great natural light
- Polished concrete floors
- High ceilings
- Mezzanine office space
- Perfect for office/retail/showroom
- Some furniture may remain

FOR LEASE: \$24/SF Modified Gross
Tenant to pay increases in OPEX over base year
Tenant to pay own utilities



Rome West Realty LLC is the listing broker of this property and therefore represents the owner.

Missouri Broker Disclosure Form

Rome West Realty LLC does not represent the buyer or tenant when showing this property or providing information, unless otherwise agreed to in writing.

CONTACT Susan Sauer 314-660-0222 susan.sauer@romewestrealtyllc.com
Alexia Anderson 314-540-3626 alexia.anderson@romewestrealtyllc.com

www.RomeWestRealtyLLC.com