



ROME  
WEST  
REALTY

2756 LAFAYETTE ST. LOUIS MO 63104

314-833-5551

## 2029-2031-2033 Delmar Blvd., St. Louis, MO 63106 1,913 - 3,776 Sq. Ft. Office, Retail, Restaurant



- ❖ 3' high (pickup truck height, or city loading dock height) gate from the parking lot to the patio,
- ❖ Each entrance has a double-door opening 4' 8" wide x 8' high
- ❖ White box finishes
- ❖ 15+ car parking adjacent to the building
- ❖ 2031 and 2033 Delmar Blvd  
combined total 3,776 sf space  
8' w x 9' h drive-in double door
- ❖ 2029 Delmar Blvd  
1,913 sf  
Desirable Delmar Blvd frontage

### FOR LEASE:

2031 and 2033 Delmar Blvd - \$8 per sq. ft. NNN

2029 Delmar Blvd - \$9 per sq. ft. NNN



*Rome West Realty LLC is the listing broker of this property and therefore represents the owner.*

Missouri Broker Disclosure Form

*Rome West Realty LLC does not represent the buyer or tenant when showing this property or providing information, unless otherwise agreed to in writing.*

CONTACT Susan Sauer 314-660-0222 [susan.sauer@romewestrealtyllc.com](mailto:susan.sauer@romewestrealtyllc.com)

[www.RomeWestRealtyLLC.com](http://www.RomeWestRealtyLLC.com)

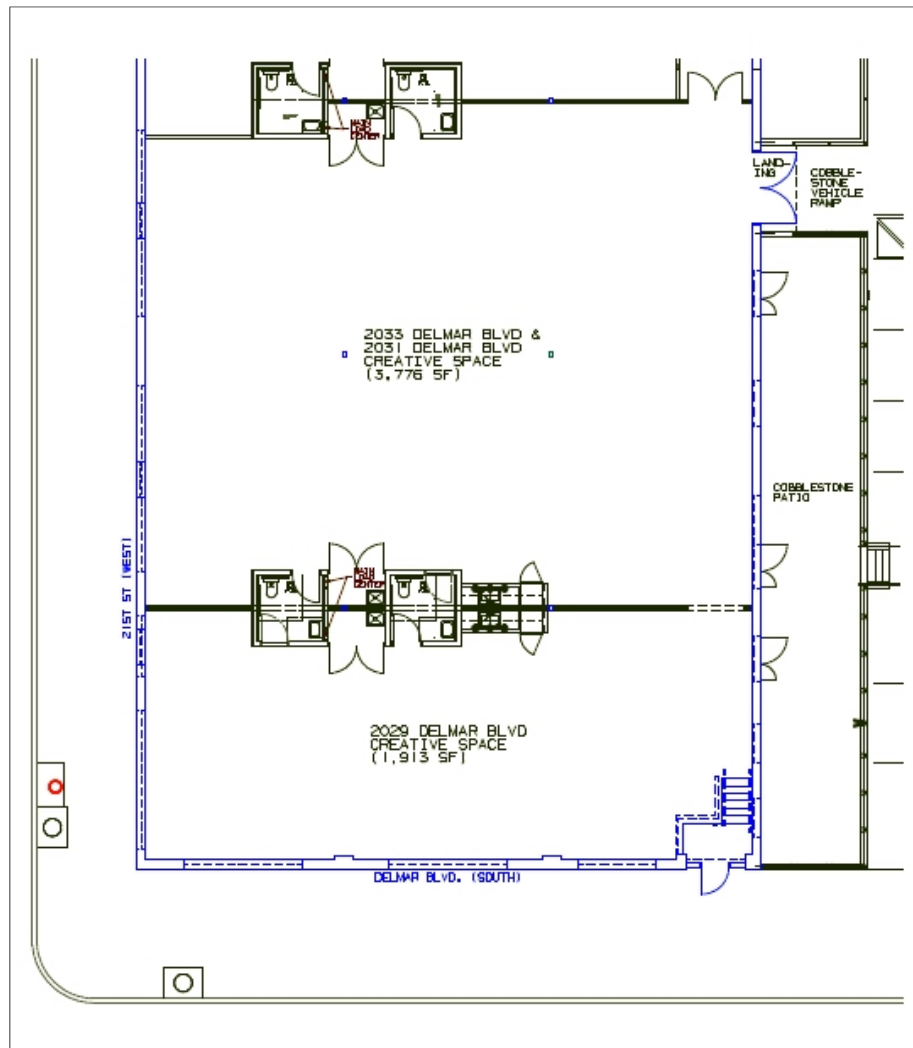


ROME  
WEST  
REALTY

2756 LAFAYETTE ST. LOUIS MO 63104

314-833-5551

2029-2031-2033 Delmar Blvd., St. Louis, MO 63106  
1,913 - 3,776 Sq. Ft. Office, Retail, Restaurant



Rome West Realty LLC is the listing broker of this property and therefore represents the owner.

Missouri Broker Disclosure Form

Rome West Realty LLC does not represent the buyer or tenant when showing this property or providing information, unless otherwise agreed to in writing.

CONTACT Susan Sauer 314-660-0222 [susan.sauer@romewestrealtyllc.com](mailto:susan.sauer@romewestrealtyllc.com)

[www.RomeWestRealtyLLC.com](http://www.RomeWestRealtyLLC.com)