



ROME
WEST
REALTY

2756 LAFAYETTE ST. LOUIS MO 63104

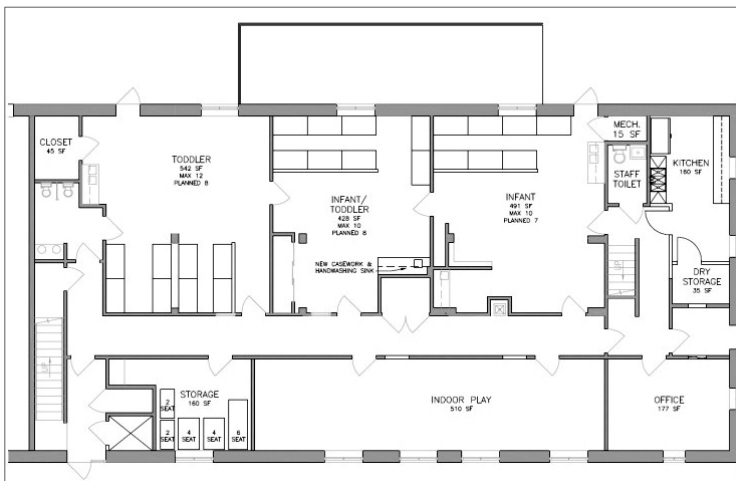
314-833-5551

5033 Northrup, St. Louis, MO 63110 Hill Business Park I - Office plus Warehouse Storage

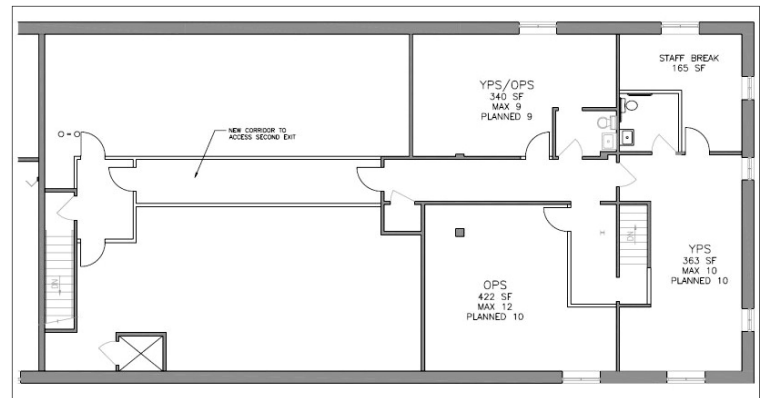


- Elevator served
- Free outdoor storage
- For creative or office space
- Perfect for professional service company
- Parking available
- 1.6 miles from Barnes-Jewish Hospital
- On bus line
- Formally designed for children's services space and works well as office environment
- Well positioned between I-44 & I-64 off of South Kingshighway
- Located in landscaped office warehouse park

FOR LEASE: \$8.50 per Sq. Ft. NNN - 5,389.02 ± SF Office
\$3.55 per Sq. Ft. NNN - 2,225.38 ± SF 2nd Floor Warehouse



Floor Plan—1st Floor



Floor Plan—2nd Floor

CONTACT JOE CARPENTER 314-862-6117 joe.carpenter@romewestrealtyllc.com

www.RomeWestRealtyLLC.com