



ROME
WEST
REALTY

2756 LAFAYETTE ST. LOUIS MO 63104

314-833-5551

Five Parcels of Prime Commercial Frontage in Jefferson & St. Francois Counties

Five Separate Parcels



Parcel 1 divisible - Jefferson County - 27.62 acres
Southeast corner of US 67 & State Road V
\$10,000 per Acre

Parcel 2 divisible - Jefferson County - 80 acres
East and West side of US 67
Between State Rd V & Valles Mines
\$6,000 per Acre

Parcel 3 divisible - Jefferson County - 31.13 acres
East and West side of US 67
Between State Rd V & Valles Mines Road at County Line
\$6,000 per Acre

Parcel 4 divisible - St. Francois County - 75 acres
East and West side of US 67 - @ Valle Mines Road
\$10,000 per Acre

Average Daily Traffic Count

US Hwy 67 – 20,960
US Hwy 67 Truck – 1,797

CONTACT JOE CARPENTER 314-862-6117 joe.carpenter@romewestrealtyllc.com

www.RomeWestRealtyLLC.com



ROME
WEST
REALTY

2756 LAFAYETTE ST. LOUIS MO 63104

314-833-5551

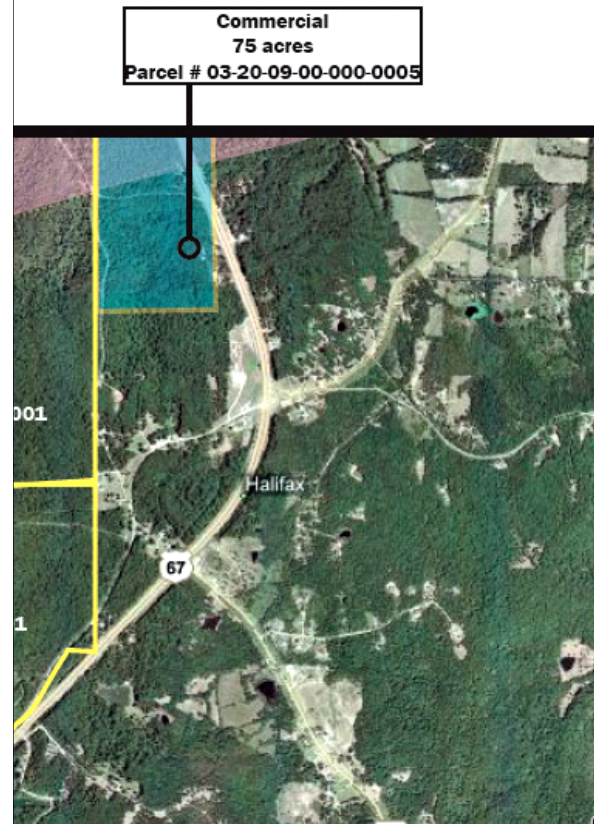
Five Parcels of Prime Commercial Frontage in Jefferson & St. Francois Counties

Aerial with Approximate Outlines

Jefferson County - 3 Parcels
27.62 acres, 80 acres, 31.13 acres



St. Francois County
75 acres



CONTACT JOE CARPENTER 314-862-6117 joe.carpenter@romewestrealtyllc.com

www.RomeWestRealtyLLC.com